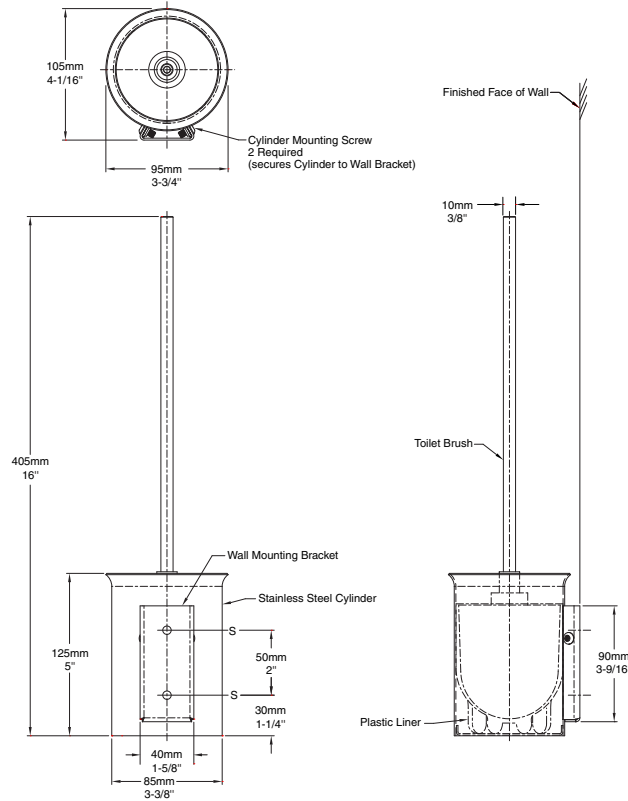




Technical Data

TOILET BRUSH HOLDER

B-544



MATERIAL:

Toilet Brush — 18-8 S, type-304, 9.5mm (3/8") diameter, stainless steel handle with satin-finish, threaded into toilet brush head.

Plastic Liner — Leak-proof molded polyethylene. Supports Toilet Brush to maintain it in a vertical position. Removable for cleaning.

Cylinder — 18-8 S, type-304, 1.2mm (18-gauge) stainless steel with satin-finish, seamless construction.

Wall Bracket — 18-8 S, type-304, 1.5mm (16-gauge) stainless steel with satin-finish. Equipped with screws to secure cylinder.

INSTALLATION:

For plaster or dry wall construction, provide concealed backing to comply with local building codes, then secure unit with sheet-metal screws (not furnished). For other wall surfaces, provide fiber plugs or expansion shields for use with sheet-metal screws (not furnished), or provide 3mm (1/8") toggle bolts or expansion bolts.

For partitions with particle-board or other solid core, secure with sheet-metal screws (not furnished), or provide through-bolts, nuts, and washers. For hollow-core metal partitions, provide solid backing into which the sheet-metal screws (not furnished) can be secured.

SPECIFICATION:

Toilet Brush Holder shall be type-304 stainless steel with satin finish. Toilet Brush Holder shall have 9.5mm (3/8") diameter toilet brush handle threaded into toilet brush. Unit shall be equipped with a removable, leak proof plastic liner to hold toilet brush in vertical position. Cylinder shall be 1.2mm (18-gauge), seamless construction. Cylinder shall be secured to the wall with screws secured into wall plate.



RYNAT INDUSTRIES AUSTRALIA PTY LTD | www.rynat.com | Email: sales@rynat.com | Aust Wide: 1300 558 518 | Tel: +61 8 6254 6555 | 20 Murray Rd South Welshpool WA |