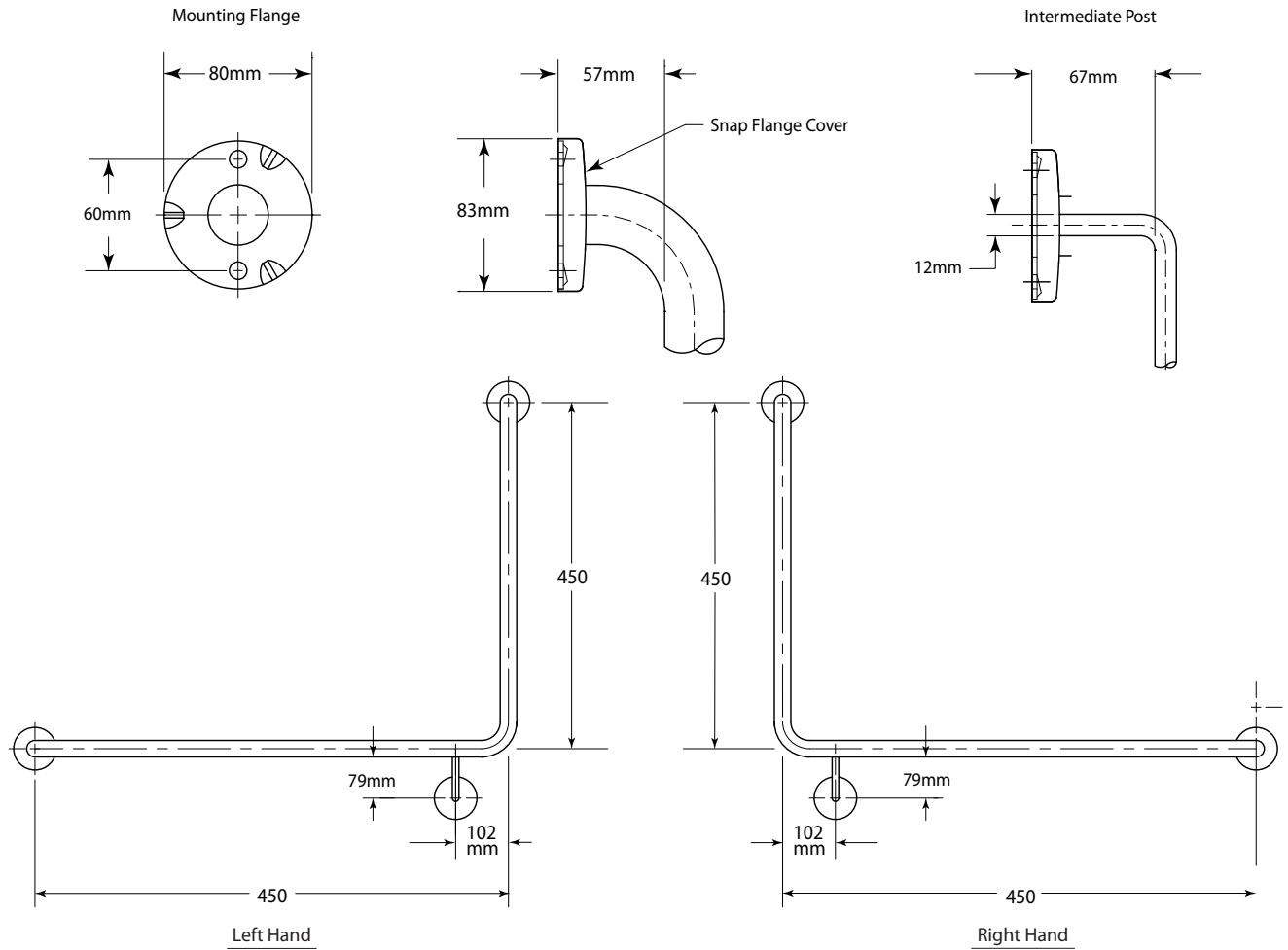




Ambulant Grab Bars Fixed to Partitioning Panels To Suit AS1428.1-2009

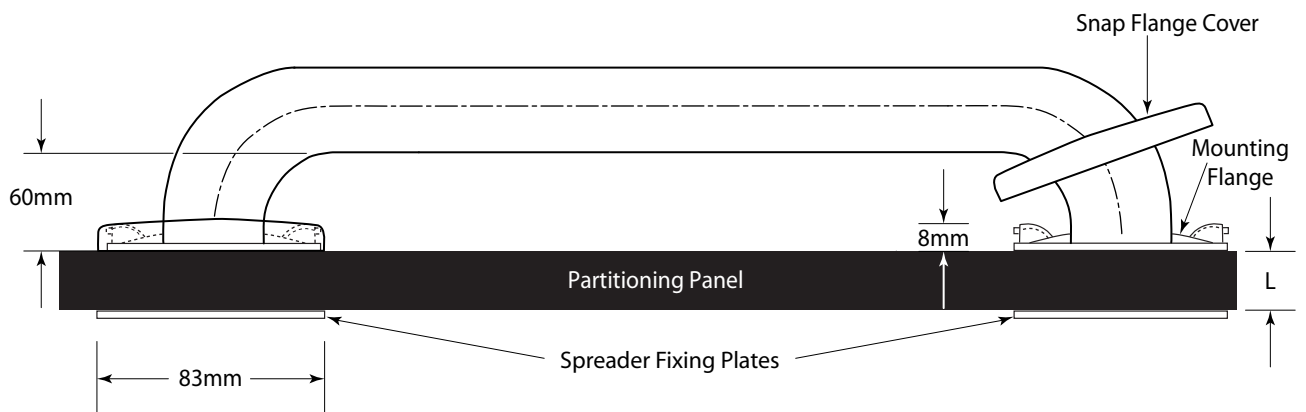
B819489
B819489.13.88
B819489.18.88
B819489.33.88

B819490
B819490.13.88
B819490.18.88
B819490.33.88



MODEL	L
B819490.13.88	13mm Thick Toilet Partitioning Panels
B819490.18.88	18mm Thick Toilet Partitioning Panels
B819490.33.88	33mm Thick Toilet Partitioning Panels

MODEL	L
B819489.13.88	13mm Thick Toilet Partitioning Panels
B819489.18.88	18mm Thick Toilet Partitioning Panels
B819489.33.88	33mm Thick Toilet Partitioning Panels



continued ...

The illustrations and descriptions herein are applicable to production as of the date of this Technical Data Sheet. The manufacturer reserves the right to, and does from time to time, make changes and improvements in designs and dimensions.

MATERIALS:

Grab Bar — 18-8 S, type-304, 1.2mm (18-gauge) stainless steel tubing with satin finish. 32mm outside diameter. Ends are heliarc welded to concealed mounting flanges. Clearance between the grab bar and wall is 57mm.

Concealed Mounting Flanges — 18-8 S, type-304, 3mm thick, stainless steel plate; end flanges 80mm diameter with two holes for attachment to wall.

Snap Flange Covers — 18-8 S, type-304, 0.8mm (22-gauge) drawn stainless steel with satin finish. 83mm diameter x 14mm deep. Each cover snaps over mounting flange to conceal mounting screws.

STRENGTH:

Grab bar configurations can support loads in excess of 113kg (1108N) if properly installed, complying with accessibility guidelines (including AS 1428.1-2001) for structural strength.

Warning: Grab bars are no stronger than the anchors or walls to which they are attached and, therefore, must be firmly secured in order to support the loads for which they are intended.

INSTALLATION:

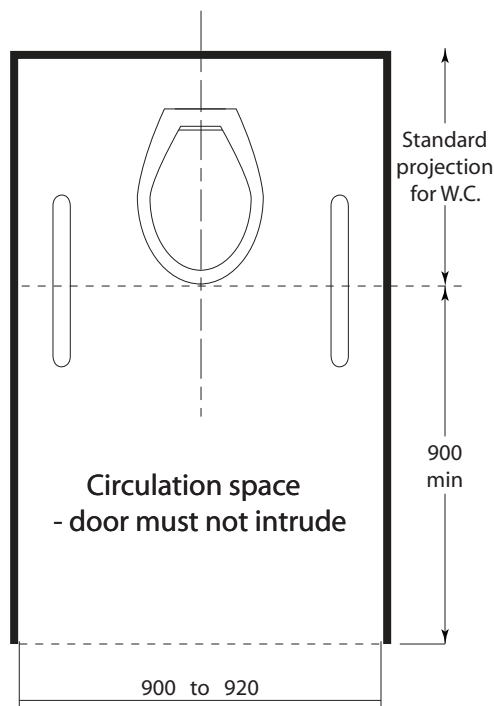
Three concealed spreader fixing plates with fixing bolts provided per plate.

Place Ambulant Grab Bar into correct position and mark holes. Drill holes through the partitioning panel. On the back of the partitioning panel, place the spreader fixing plates into position. Reposition Grab Bar over the drilled holes, fasten concealed anchor device to the partitioning panel with two bolts provided. Fix through the partition panel making sure to lock into the back spreader plates. Tighten. Snap flange covers are then mounted over each anchor device to conceal fixings.

SPECIFICATION:

Grab bar shall be type-304 stainless steel with satin finish. Grab bar shall have 1.2mm (18-gauge) wall thickness and 32mm outside diameter. Clearance between the grab bar and wall shall be 57mm. Concealed mounting flanges shall be 3mm thick stainless steel plate, 80mm diameter, and equipped with two screw holes for attachment to wall. Flange covers shall be 0.8mm (22-gauge) stainless steel, 83mm diameter, and shall snap over mounting flanges to conceal mounting screws and/or WingIt fasteners. Ends of grab bar shall pass through concealed mounting flanges and be heliarc welded to form one structural unit. Grab bar shall comply with barrier-free accessibility guidelines (including AS 1428.1-2009) for structural strength. Manufacturer's service and parts manual shall be provided to the building owner/manager upon request.

TYPICAL AMBULANT W.C.



RYNAT INDUSTRIES AUSTRALIA PTY LTD | www.rynat.com | Email: sales@rynat.com |

Aust Wide: 1300 558 518 | Tel: +61 8 6254 6555 | 20 Murray Rd South Welshpool WA |