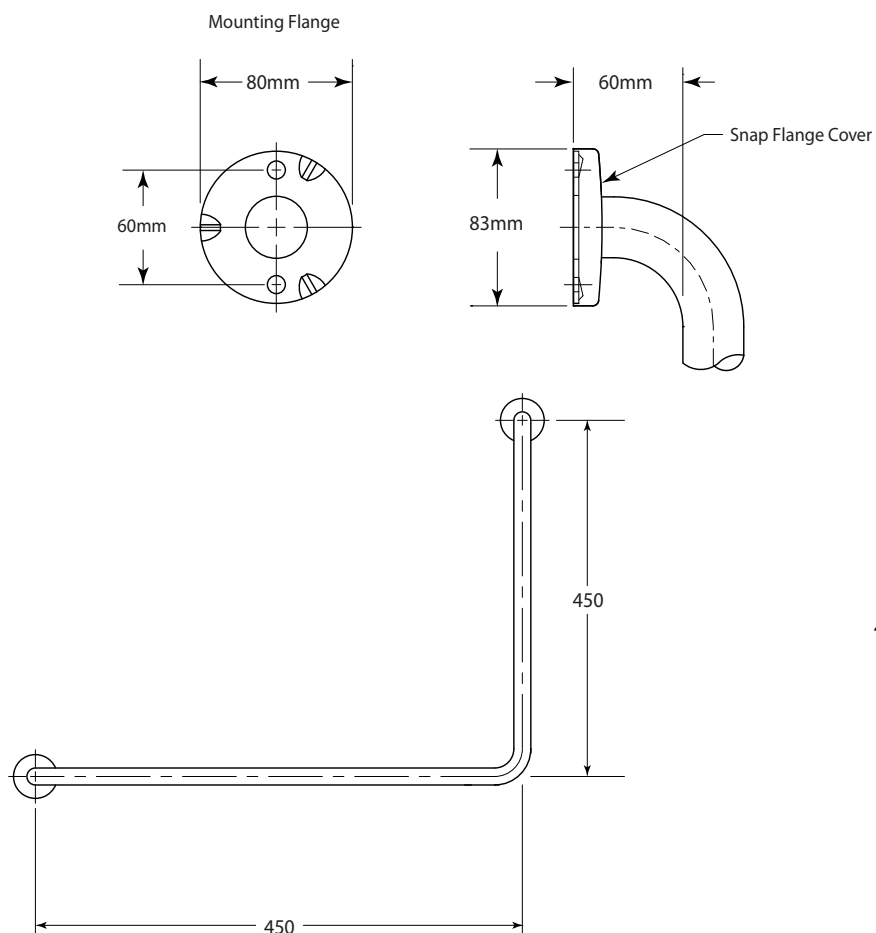




Technical Data

Ambulant Grab Bars Fixed to Masonry or Stud Walls
C819400 | C819400.13 | To Suit AS1428.1-2009



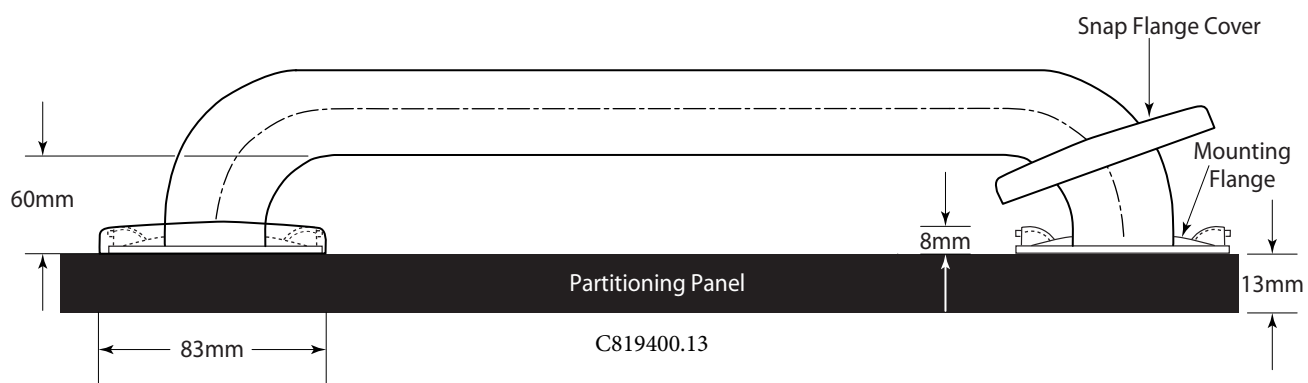
Left or Right Hand

450mm x 450mm

Model C819400 Grab Bar

Model C819400.13 Grab Bar including

Fixing Plates to suit 13mm thick Cubicles



450mm x 450mm Grab Bar with Partitioning Fixing Plates

continued ...

The illustrations and descriptions herein are applicable to production as of the date of this Technical Data Sheet. The manufacturer reserves the right to, and does from time to time, make changes and improvements in designs and dimensions.

Revised 07/21



Technical Data

Ambulant Grab Bars Fixed to Masonry or Stud Walls
C819400 | C819400.13 | To Suit AS1428.1-2009

MATERIALS:

Grab Bar — Type-304 Stainless Steel, 1.2mm (18-gauge) stainless steel tubing with satin finish. 32mm outside diameter with concealed mounting flanges. Clearance between the grab bar and wall is 60mm.

Concealed Mounting Flanges — Type-304, 3mm thick, stainless steel plate; end flanges 80mm diameter with two holes for attachment to wall.

Snap Flange Covers — 18-Type-304 Stainless Steel. Each cover snaps over mounting flange to conceal mounting screws.

STRENGTH:

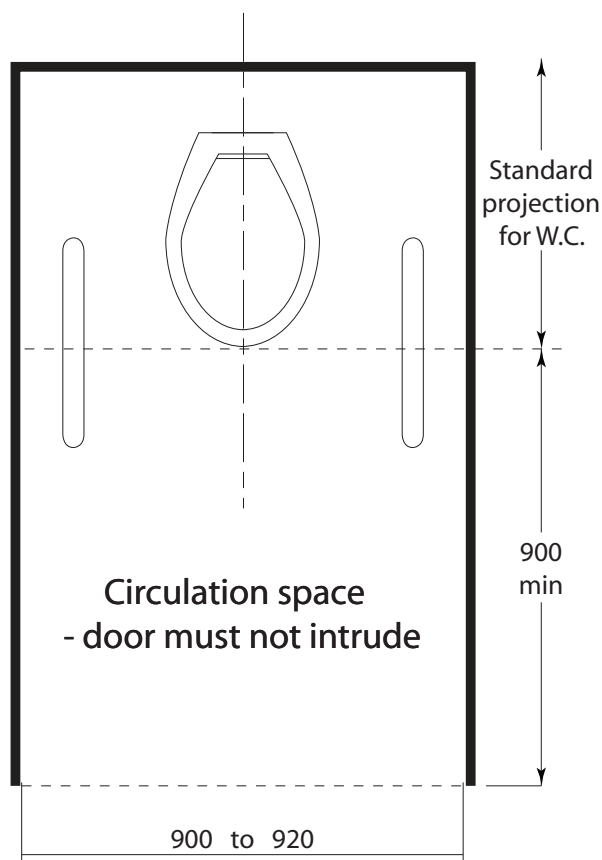
Grab bar configurations can support loads in excess of 113kg (1108N) if properly installed, complying with accessibility guidelines (including AS 1428.1-2009)

Warning: Grab bars are no stronger than the anchors or walls to which they are attached and, therefore, must be firmly secured in order to support the loads for which they are intended.

INSTALLATION:

Provide concealed anchor device or backing as specified or required in accordance with local building codes before wall is finished. Fasten concealed mounting flanges to anchor device or backing with two screws in each flange. Snap flange covers over each mounting flange to conceal mounting screws.

TYPICAL AMBULANT W.C.



The illustrations and descriptions herein are applicable to production as of the date of this Technical Data Sheet. The manufacturer reserves the right to, and does from time to time, make changes and improvements in designs and dimensions.

Revised 07/21